

NEW ITEMS



Flat Rat Tail Stay – Plate Mount

Item	Material	Height
RT3F	Cast Aluminum	8 1/4"



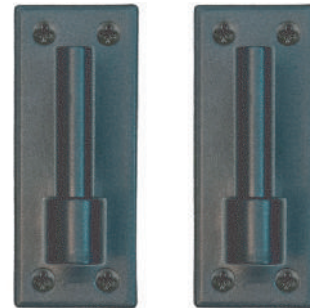
Protruding Rat Tail Stay – Plate Mount

Item	Material	Height
RT3P	Cast Aluminum	8"



Traditional Rat Tail Stay

Item	Material	Height
RT2PSS	Stainless Steel	5 3/8"



Traditional Suffolk Pintle

Item	Material	Offset
EHTSS075	Stainless Steel	3/4"
EHTSS175	Stainless Steel	1 3/4"
EHTSS225	Stainless Steel	2 1/4"
EHTSS325	Stainless Steel	3 1/4"



Traditional Slide Bolt

Item	Material	Length
EHTBSS	Stainless Steel	11"

